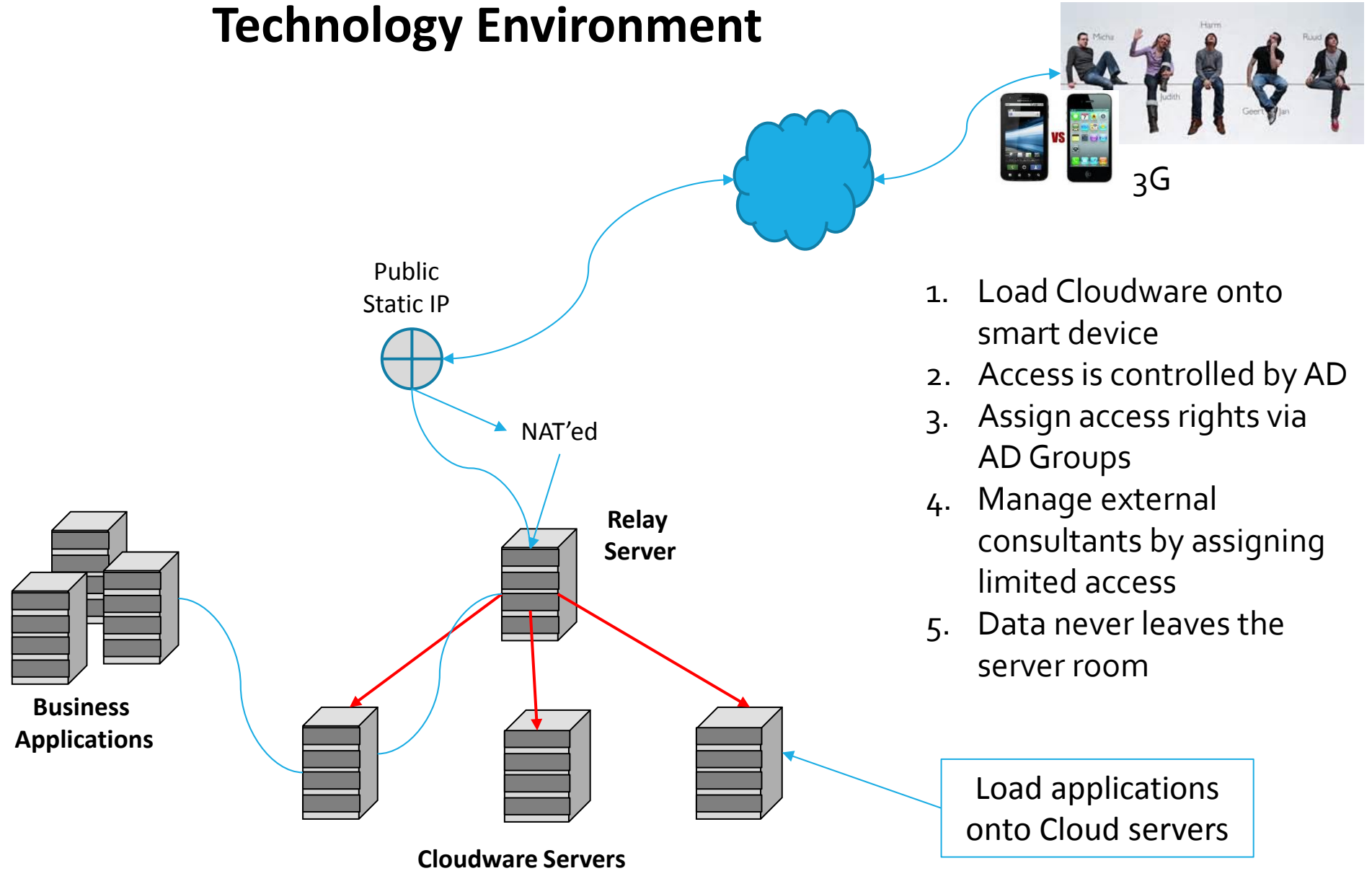




Technology Environment



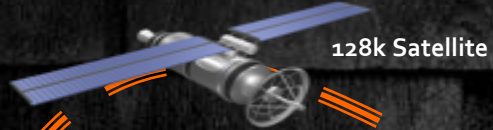
Some Benefits

- You remove the need for VPN's (in many cases)
- You introduce "central computing"
 - A reason decentralised computing was introduced was due to the lack of bandwidth & the high cost there-of
 - Increase data security (data never leaves the data centre) – "*cash in transit*"
- Solution for "BOYD" in terms of how do you control access your systems and business data
 - In essence you have a "hosted desktop"
 - Backup of "user data" is simplified as the data is hosted centrally
- There are opportunities to reduce your MPLS costs
- Backend: reduce the resources required
 - SAP user in native mode requires +-400megs of memory on Terminal server
 - Cloudware you use 40megs of memory
 - For 100 users that translates from SAP (48-50 GIGS) to Cloudware (4 to 8 GIGS)
- Less expensive than Terminal Server and Citrix solutions
- DRP solution is simplified and the overall cost reduced (especially in terms of LAN's & WAN's)
- Reduce capital investment in hardware (Personal computers, servers etc)





Satellite Slide



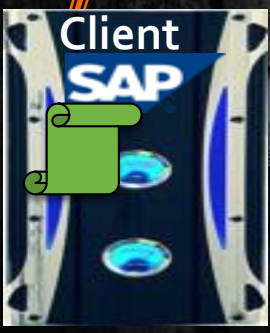
128k Satellite

Minimum 600ms Latency

Only Display Information
Send to user's screen



Timeout Due to Latency
(Time to return info)



<10ms Latency

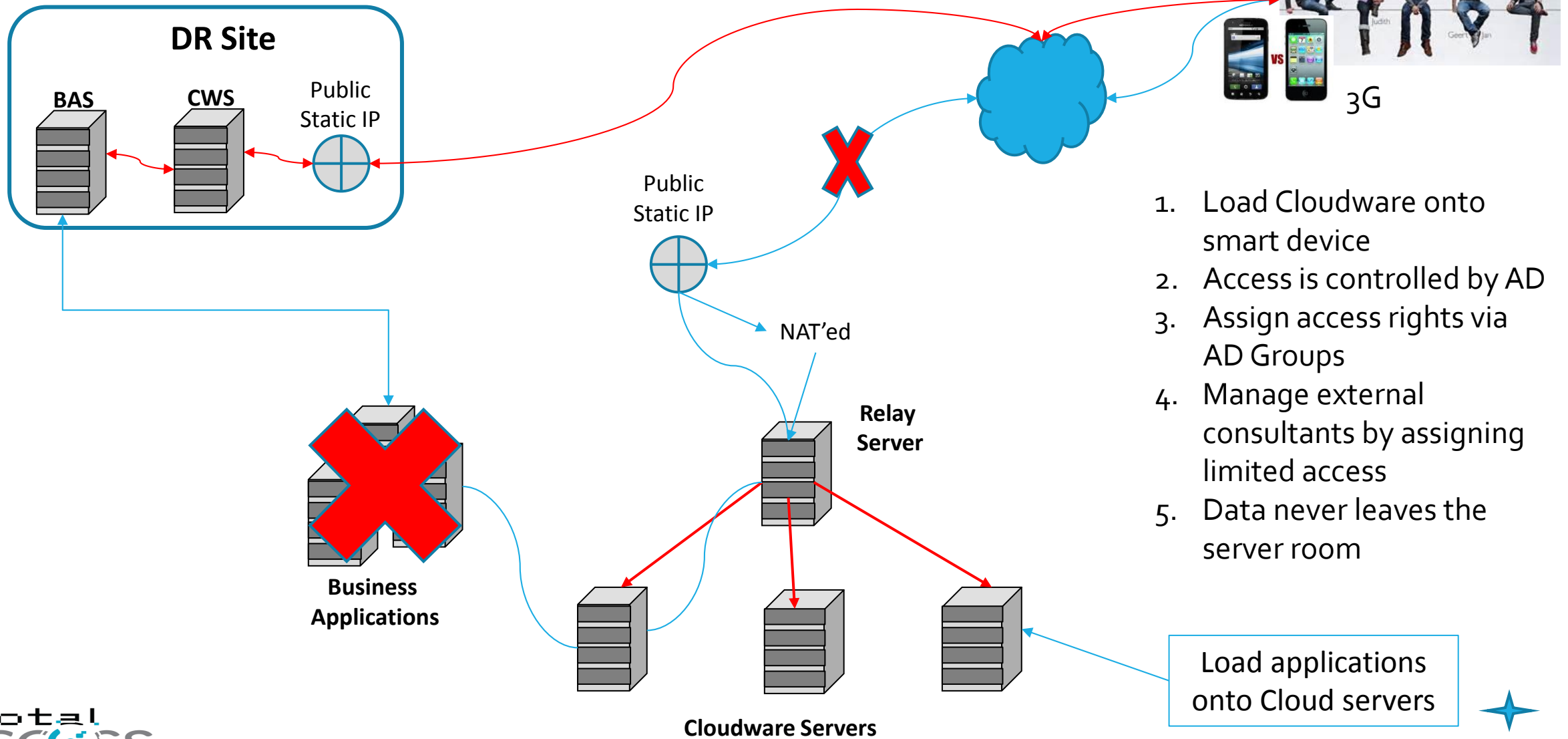




The freedom to roam and access your data from anywhere, securely and quickly

Thank you – any questions?

Technology Environment



1. Load Cloudware onto smart device
2. Access is controlled by AD
3. Assign access rights via AD Groups
4. Manage external consultants by assigning limited access
5. Data never leaves the server room

Load applications onto Cloud servers

